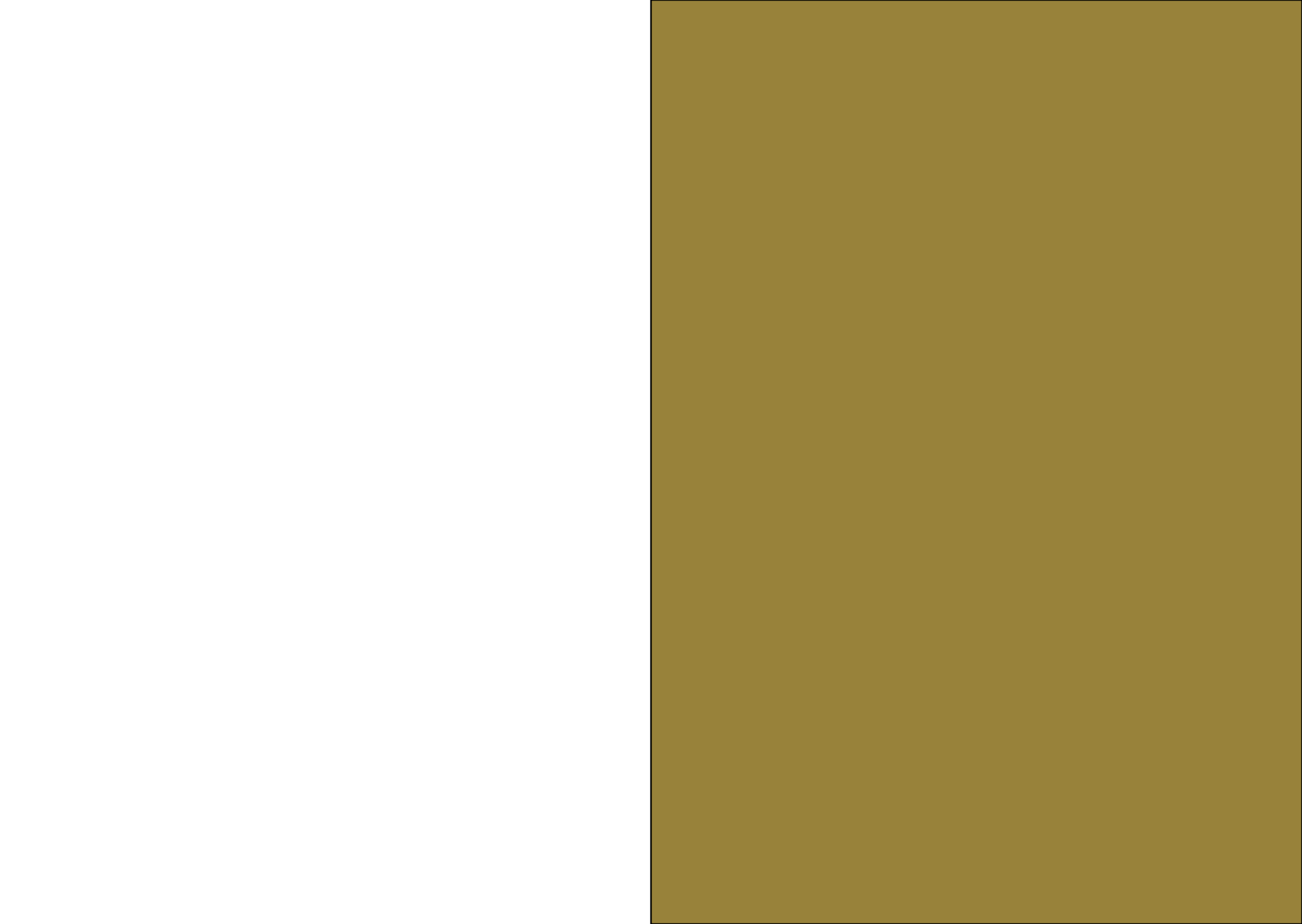


# Pierre d'Avoine Architects

Portfolio



Pierre d Avoine and Kuo Jze Yi are pleased to present  
a new portfolio of work by Pierre d Avoine Architects in  
association with KJYAO, Beijing.

# CONCEPTUAL INGENUITY AND DESIGN INNOVATION



## A SMALL ISLAND - A BIG BUILDING

The transformation of Birnbeck Island Pier to provide 100,000 square metres of development at the British seaside resort of Weston-super-Mare

# BUILDING BEAUTIFULLY



CHATFIELD HOUSE GREENWICH

Winner of the Brick Development Association Refurbishment Award 2010 from a shortlist including Kings Cross Station, London

Introduction

# INTRODUCTION

Pierre d Avoine Architects is an award winning practice based in Central London with an international portfolio of clients, and a strong reputation for inspiring work combining conceptual ingenuity and design innovation, built to high standards, with a strong supporting commitment to research and development across the fields of construction technology, environmental sustainability, and cultural contextualism which has been widely recognised.

Pierre d Avoine Architects works on a broad front, including urban design and landscape, commercial, retail and residential development, the design of cultural and leisure environments, as well as interiors, exhibition and furniture design. The practice has aimed to maintain a rich mixture of work in the belief that architectural thinking flourishes best over a range of different scales and types of project. Over the years the practice has developed a critical response to the conditions of contemporary global culture, informed by its sustained contacts across the world, with work in Asia, Africa, Europe as well as the Caribbean.

Pierre d Avoine Architects always works closely with clients and consultants to develop inspiring and sustainable building projects, and has actively set out to foster young, highly talented architects, in the belief that talent and experience are mutually supportive in architectural practice. The practice was formed in 1979 and has operated as a highly-qualified and motivated team enjoying a high rate of competition success. Our work has been extensively exhibited and published.

# CITY AND COUNTRY

## URBAN DESIGN AND MASTERPLANNING

In the UK and Japan we have carried out urban design and masterplanning studies for commercial and local authority clients.

Our principal aims are:

To work closely with clients, stakeholders and the local community at relevant stages of the project.

To carry out in-depth research and ethnographic studies to enable the team to gain perspective and focus on relevant issues.

To create appropriate narratives for the project which local inhabitants and visitors can identify with and contribute to.

To maximise development opportunities without loss of intrinsic local character and quality.

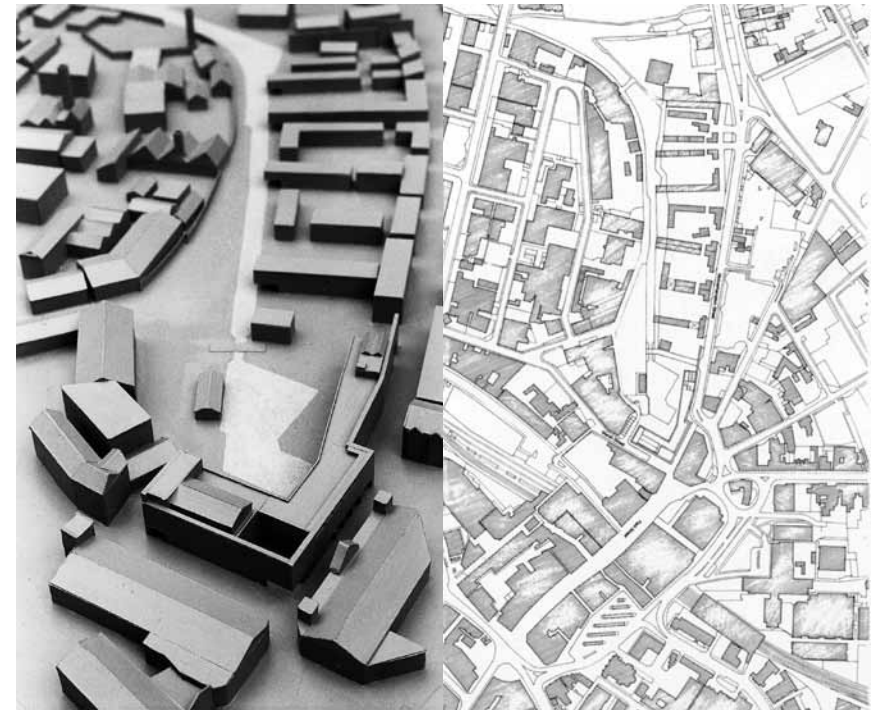
To build beautifully in materials that age well.

To create open-ended environments that have the potential to evolve harmoniously.

## LANDSCAPE DESIGN

Pierre d Avoine Architects has designed landscapes in historically important urban and rural settings in the UK, Japan and Iran including The Green Route, Tehran, introducing methods and strategies for greening the urban environment. A Room in the City at Elephant and Castle Roundabouts, London. Restoration of Grade 1 Landscape of Rough Grounds for Westonbirt Equestrian Centre, Gloucestershire. Restoration of Grade 1 walled garden and environs at Crowcombe Court, Somerset, Tsudanuma City Green in Tokyo.

Our aim is always to evolve sensitive responses to the local context, and where applicable to work with expert plantsmen to create ecologically appropriate environments that delight and satisfy the senses.



Walsall Art Gallery and canal spur masterplan, UK



Crowcombe Court, Somerset



# COMMERCIAL AND RETAIL

## OFFICE AND MIXED USE DEVELOPMENT

We design bespoke office buildings and also speculative office and mixed-use buildings and environments for developer clients. With our client Media Office Limited, we evolved a strategy for development where the aim is to retain and refurbish buildings on redundant post-industrial sites, complemented with carefully designed new buildings and landscaping, and marketed as Media Villages - a new type of mixed-use environment which includes all the facilities and services found in a traditional city neighbourhood.

## RETAIL

Pierre d Avoine Architects has carried out interior design and brand consultancy for fashion designers including Michiko Koshino, Issey Miyake, Timothy Everest and DAKS Simpson and for department stores including Harvey Nichols in London and Parco Co Ltd in Japan.

Our flagship shop for Michiko Koshino in Mayfair, London described as the first 'minimalist' designer shop in the UK has proved highly influential.

In Japan we designed a major shopping and entertainment building for Parco Co Ltd at Otsu near Kyoto. Our proposal which includes a roof garden and open-air cinema, provides a dramatic new landmark and focal point on newly reclaimed land at Lake Biwa.



Media Office City, Heathrow, London



Michiko Koshino designer shop, Mayfair, London

# PUBLIC INSTITUTIONS AND EVENTS

## CULTURE

Pierre d Avoine has been at the forefront of architectural culture in the UK, as practitioner and teacher, for over twenty years and has exhibited and lectured widely on architecture, design and the environment internationally.

The practice has designed permanent and temporary environments for the arts in the UK and Europe including the Venice Architecture Biennale 1996. Pierre d Avoine has collaborated with artists of international standing, including Helen Chadwick at The Elephant and Castle, Diana Burrell on TRAP at the RIBA London, Catherine Elwes on GREETING at Leeds General Infirmary, Heather Ackroyd and Daniel Harvey on HOST at the Venice Biennale. Pierre d Avoine has been invited to curate projects including the Maehara Street Festival, Tokyo and temporary artworks, with Deborah Baker, at Leeds Millennium Square.

## EDUCATION

Pierre d Avoine Architects was commissioned by The Royal College of Art, London to redesign the Computer Related Design Department, and by the London Borough of Tower Hamlets to design an extension to Langdon Park School. We also developed a modular laminated timber construction system with structural engineer Atelier One, for creative industries business units at Aberystwyth University, Wales.

Pierre d Avoine is currently guest professor at The Royal Danish Academy of Fine Arts, Copenhagen and an external examiner at several schools of architecture in the UK and at MSA University, Cairo.

## LEISURE

Pierre d Avoine Architects has acted as consultant and designed projects in rural areas where land use has to be reconsidered - in particular where farming practice has proved to be uneconomic and farm land has to be replanned for leisure use. Exemplar projects include Westonbirt Equestrian Centre and the conversion of Creswells Farm, Berkshire into a polo pony training facility.



Temporary art works, Leeds Millennium Square, Leeds



Exhibition, Trap, Fused , RIBA, London

# LIVING

## HOUSES AND HOUSING

Pierre d Avoine Architects has designed houses in India, Iran, Ghana, the West Indies and the UK. Several of our residential projects have won awards including the Slim House which won Concept House 99 at The Ideal Home Show and Chatfield House which won the Brick Development Association refurbishment award 2009-10.

Pierre d Avoine and Clare Melhuish published Housey Housey - A Pattern Book of Ideal Homes in 2004 which presented twenty three houses designed by Pd AA in the context of the traditional pattern book. Housey Housey has become a highly acclaimed and influential reference book.

Pierre d Avoine Architects has developed an approach to the design of domestic spaces that is based on a detailed study of cultural and social context and thorough investigation of place. Our large scale residential development has drawn on our research into suburbia as a global phenomenon, and an anthropological interest in how people adapt to their domestic environments.

We aim to provide humane and comfortable homes and settings for domestic life that are sensitive to and readily adaptable to evolving social and environmental conditions.

## HOTELS AND RESORTS

Pierre d Avoine Architects has designed hotels in central London, including a proposal for The Gallery on Park Lane, Mayfair and the Natural Balance spa resort near Crowborough, in the Sussex countryside.

The Queen s Head Hotel was designed a single room hotel to be sited on top of the Queen Elizabeth Hall on London s South Bank in 2012.

We work closely with clients to develop brand identity and offer a complete design service including architecture and interior design, landscape and environmental design, graphics and fashion with the aim of providing exceptional facilities and memorable experience for residents and guests.



Octagon House, Rough Grounds, Gloucestershire



Big House Little House, Mortlake Riverside, London

# INTERIOR AND PRODUCT

## INTERIOR DESIGN

Pierre d'Avoine Architects has designed interiors in a wide range of residential, commercial and retail environments from smaller flats and houses to media offices in refurbished warehouses and factories and department store buildings.

Our approach is to develop a considered design response in close consultation with the clients, after careful measurement, investigation and analysis of the host buildings to evolve economic solutions which enhance existing environments and provides flexible, comfortable interior spaces that function well and are enjoyable to use.

## PRODUCT AND FURNITURE DESIGN

Pierre d'Avoine Architects has designed furniture and fittings in a variety of materials including concrete, metal, plastic, stone, terrazzo and timber for interiors and the external environment. Products include ironmongery, bathroom and kitchen fittings, storage and shelving systems.

We design one-off pieces as well as products and furniture for commercial production.



Dancing Brave chair for International Linen, Milan

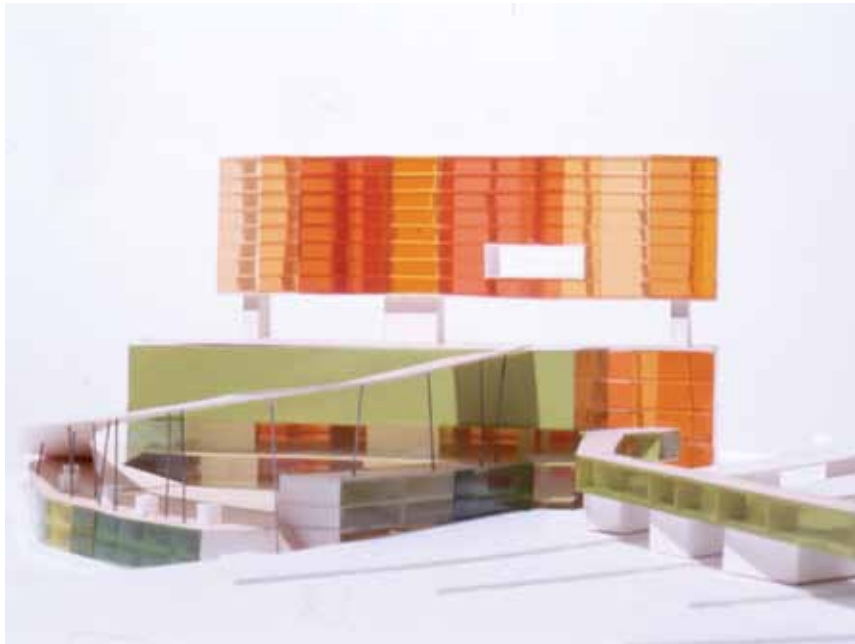


Terrazzo bath, penthouse flat, Marylebone, London

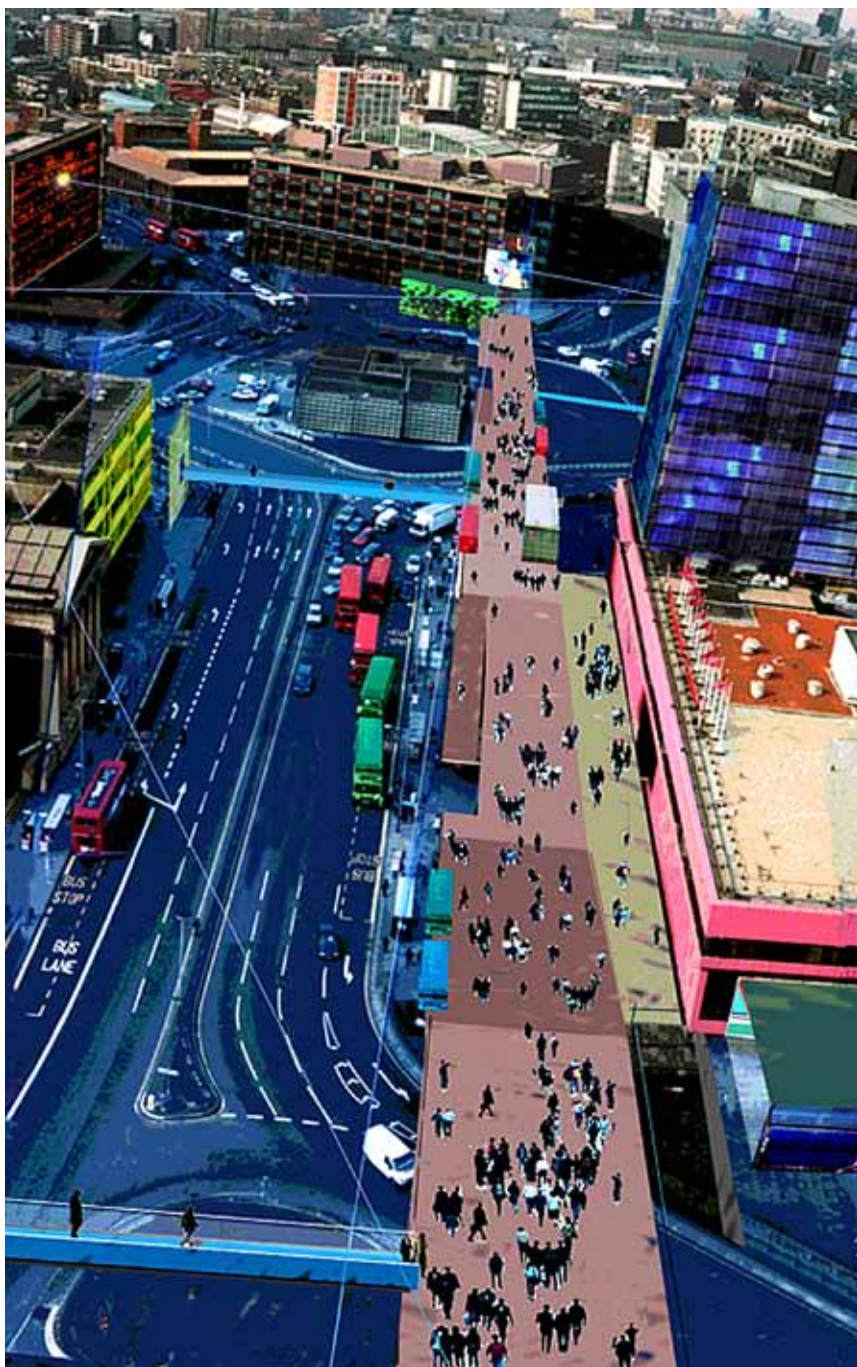
Projects

## MEZZANINE, MEDIA VILLAGE BRISTOL, UK

Mezzanine is a two-phase project to revitalise a large industrial site, bounded by the River Avon and canal and adjacent to Bristol Temple Meads railway station, as a media village and a new public place for Bristol in the 21st century. Pierre d Avoine Architects has designed a new cultural and commercial focal point for the city, combining shopping, offices, housing, a hotel and event building with an elevated public place - Mezzanine - which commands a 360 degree panorama over Bristol. All existing private connections to the site are revitalised as public routes.







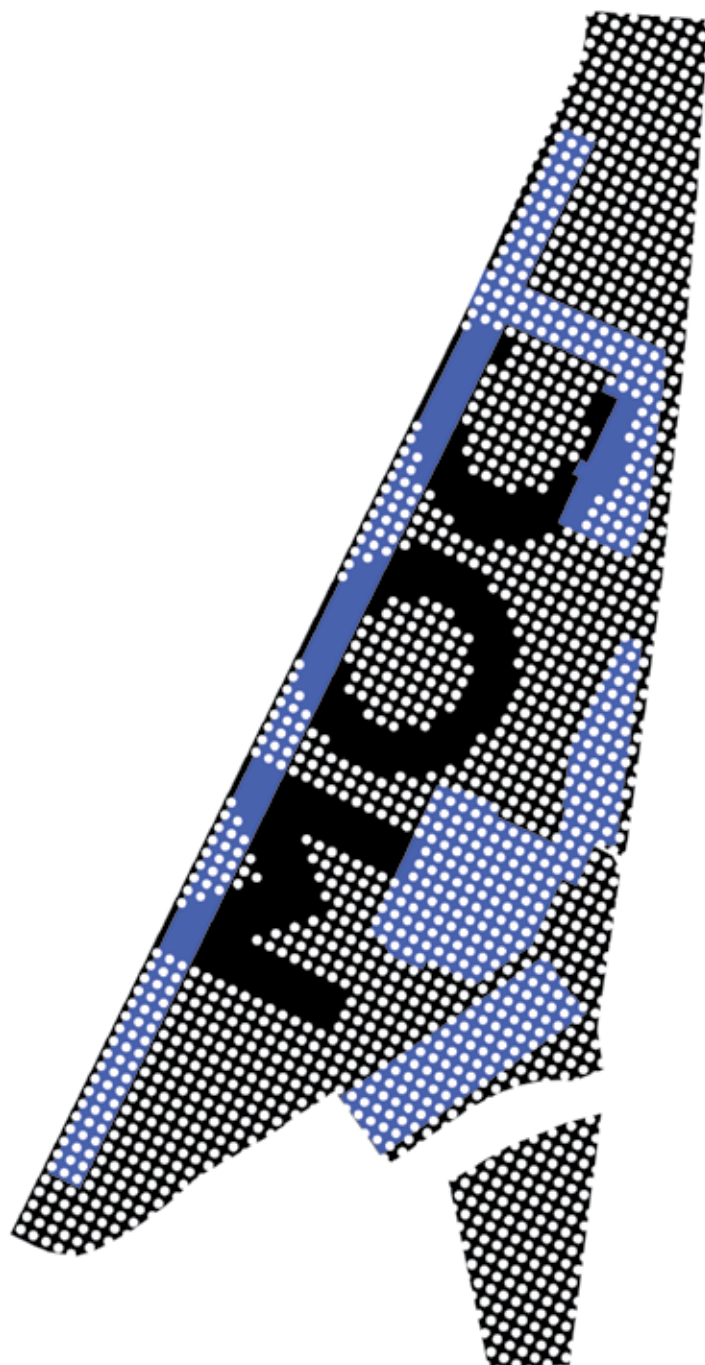
## ELEPHANT AND CASTLE ROUNDBABOUTS LONDON

Pierre d Avoine Architects was commissioned to prepare designs for the transformation of the Elephant and Castle roundabouts and transport interchange by the Government Office for London, The Architecture Foundation and the London Borough of Southwark. We developed the concept of an urban pier which allowed safe, unhindered pedestrian movement above the traffic and provided a venue for shopping and festive events. This was combined with a programme for refurbishing the environment of the roundabouts including resurfacing of the ground plane as a carpet to form a new room in the city .



## MEDIA OFFICE CITY HEATHROW, LONDON

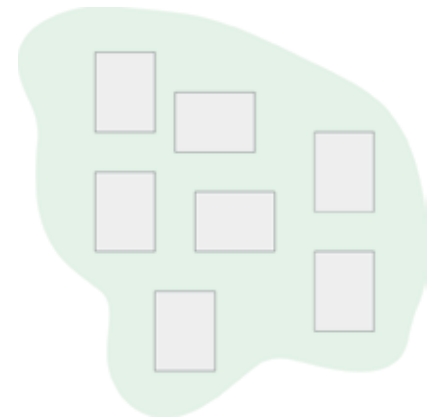
The reinvention of the Thorn EMI site at Hayes near Heathrow Airport, West London as a business park is intended to establish the site as a physical landmark with high visibility and as a virtual landmark of comparable significance in the landscape of global media culture. The letters MOC are spelt out in a floating 'ceiling' of lights stretched above the buildings and carpark, and clearly visible from aircraft flying in and out of Heathrow. The site is also viewed at high speed from passing trains through an open screen of free-standing pylons generating kinetic excitement along the railway edge. The entrance to Media Office City is defined by a new 500 metre long edge building, containing conference and recreational facilities, set above a raised plinth through which the restored Wallis Gilbert art deco buildings can be viewed above the carpark. This has been excavated and planted with a grid of apple trees to form a green canopy.





## SWAYTHLING HOUSING HAMPSHIRE, UK

This is a scheme for residential development in which we have designed nine different dwelling types for a regular plot size. There are two basic building types: a multi storey L-shaped structure (two to four storeys), and a single storey house. The approach here achieves a range of different types and sizes of dwellings, which can also be adapted and extended during their lifespan to suit a household's changing circumstances. The plots can be arranged to create a regular network of streets and squares with independent vehicular and pedestrian circulation routes. A typical 11 hectare site can accommodate at least 40 dwellings per hectare and has the potential to provide an increase in density of up to 92 dwellings per hectare without encroaching on the public squares which measure 42 by 42 metres. The public squares could contain small pavilions offering a variety of public facilities. The surrounding farmland is capable of producing sufficient biomass crop to provide each site with fuel for a district heating system, as well as parkland for recreation and leisure.



SLIM HOUSE, MODEL TERRACE  
URBAN PATTERN

The proposal for Slim House, winner of Concept House 99, sets out the programme for a new terraced house of the future, with the potential for large scale prefabricated production and low cost construction. A prototype was built at the Ideal Home Show. The project is designed to be environmentally sustainable, and to provide a balance between private and communal life. It features internal courtyards, communal roof gardens at first floor and flexible internal space allowing for a variety of domestic arrangements as well as live/ work and a shop. It is envisaged that Slim House could work well organised into Model Terraces on a regular grid layout. It could also be easily inserted into the traditional fabric of the city maintaining the existing Urban Pattern of streets and terraces.



Five principles for the Slim House

1. Loose Fit/ Flexible Accommodation
2. Raised Threshold
3. Roof Garden
4. Active Fa ade with Urbane Front and DIY Back
5. Vertical Extension





## EQUESTRIAN CENTRE WESTONBIRT, GLOUCESTERSHIRE

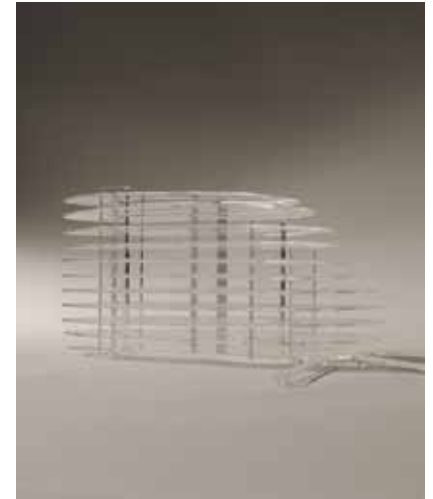
The site of the equestrian centre is part of the Westonbirt Estate, a Grade 1 listed landscape in Gloucestershire. The development includes stables for forty horses, indoor and outdoor riding schools, a belvedere for entertainment and view, the clients house and a grooms lodge, all of which are embedded in clearings formed within the woodland plantation known as Rough Grounds. The equestrian centre is part of an ambitious ten year plan to restore the historically important landscape laid out in the mid-nineteenth century. The project involves constructing a new road and bringing services to the site, two hundred metres across a field to the south. A major aim of the project has been to evolve principles for new initiatives for sustainable rural development.





## BIRNBECK ISLAND WESTON SUPER MARE, SOMERSET

Our proposal for Birnbeck Island in collaboration with WYG Planning and Design, Atelier One and Max Fordham llp was runner-up in the international competition held by developer Urban Splash. We proposed revitalising Birnbeck Island by reconceiving it as a much bigger form than it was originally - a vast building in the shape of a small island a strategy supported by a variety of readings. The one million square foot building includes 200 flats and duplexes, a hotel, a range of leisure facilities and data centre. The development was intended as a major additional catalyst to the ongoing regeneration of Weston-super-Mare as an international 21st century seaside resort in scale with the ambition of the proposed Severn Barrage and the positive changes taking place in the economic and cultural life of the region.





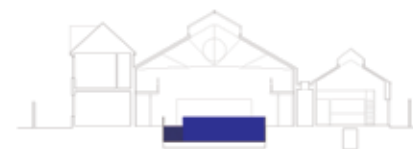
## DIMBLEBY PLACE RICHMOND, LONDON

Dimbleby Place is located on an historically important site between Richmond Green and the River Thames. Pierre d'Avoine Architects has designed a mixed-use development comprising offices and houses to replace the redundant printing factory. The proposed L-shaped building is carefully integrated into its context, forming a new urban square which links the town centre with the river and the adjacent residential neighbourhood.



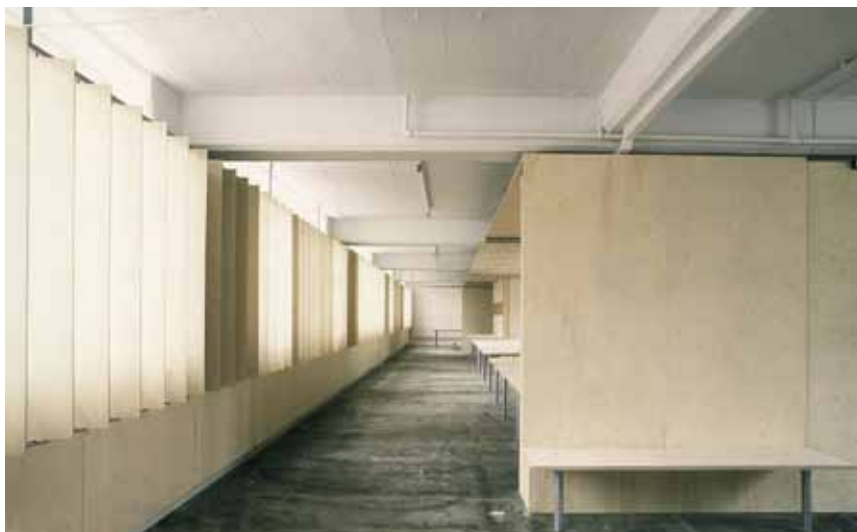
## OLD BRENTFORD BATHS LONDON

Pierre d Avoine Architects refurbished and converted an atmospheric Victorian Grade 2 Listed swimming baths into an office and residential development. The project provided for a commercially viable development which preserved the interesting features of the existing building, and demonstrates the scope for re-conceptualising the complex in response to present-day needs. The empty swimming pool hall itself remains the focal point of the development. It has been lined and connected to the poolside with two ramps and provides a container for an open plan workspace. The adjacent changing rooms and other cellular spaces to either side have been converted into five residential studios. A new house has also been designed to replace the redundant plant room.



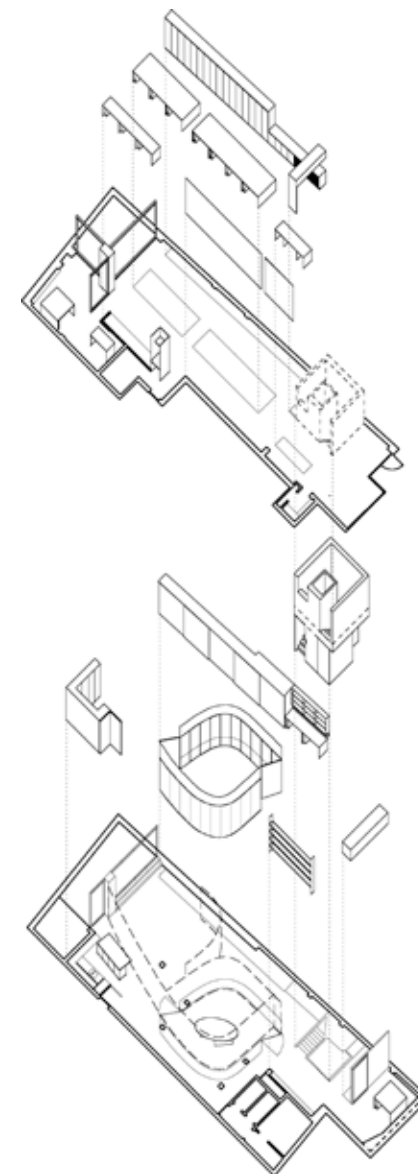
## WMH DESIGN STUDIO BLOOMSBURY, LONDON

Pierre d Avoine Architects was commissioned to provide a new studio for Williams Murray Hamm, a leading graphic design consultancy in the old Heals Furniture Factory of Tottenham Court Road. Our approach was to construct a freestanding steel and plywood assemblage of partitions and sliding screens to provide flexible work spaces which could be opened or closed to suit the occupants. The south facing windows were fitted with specially designed pivoting plywood louvres to provide shading and offer a variety of daylight effects within the space.



## WMH DESIGN HEADQUARTERS, CLERKENWELL, LONDON

Our clients bought a 400 sq metre office on two floors of a mixed-use building in Clerkenwell. The fit-out provides a large new studio at ground floor, with a central oak workstation running the full length of the space, set behind the reception, with directors' offices to one side and a linear storage wall to the other. The staircase to the lower floor is designed as an enclosed top-lit gallery. The lower floor is arranged around the curvaceous boardroom, built with deep vertical panelled walls clad externally with polycarbonate sheet which provide further display space and lighting. The ceiling is fitted with an organic layout of curtain tracks to create more intimate or open-plan working arrangements. The interior has been designed as a flexible, loose-fit space capable of adaptation and customisation.





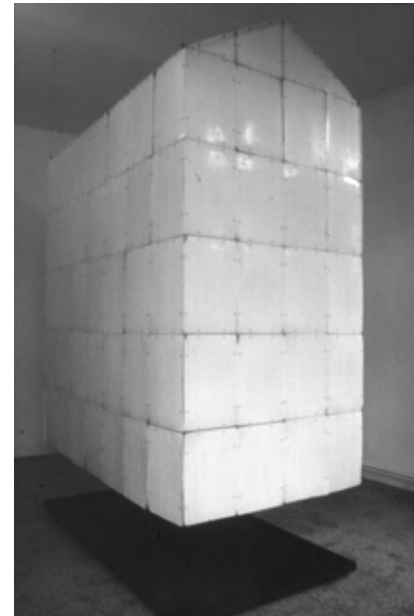
## LEEDS MILLENNIUM SQUARE LEEDS, UK

This project for temporary art works developed with artist Deborah Baker, was commissioned to provide a setting for Leeds Millennium Square while under construction. It comprises an extensive hoarding which surrounded the construction site covered with a dot matrix conceived as a super graphic landmark, visible from a great distance. Within the matrix spy-holes provided tantalising glimpses of the secret world of construction within, which itself provided a backdrop for billboard sized photographs printed onto canvas, illuminated at night. Access to a viewing gallery on the site was via specially designed entry box painted gold to match the Victorian city hall clock nearby.



HOST AT VENICE BIENNALE  
VENICE, ITALY

Pierre d'Avoine Architects was invited to make site specific installations at the Venice Biennale in collaboration with artists Heather Ackroyd and Daniel Harvey. We proposed HOST - a series of aedicular constructions, representing an exploration of themes of growth, transformation and decay. Part of the work was sited in the Nuova Icona Gallery on the Giudecca, part in a derelict chapel on the Dorsoduro and other elements at various locations along the canals which form a public route between the two.



LAND ARCHITECTURE PEOPLE  
EXHIBITION  
RDAFA, COPENHAGEN

Pierre d'Avoine was appointed as a guest professor at The Royal Danish Institute of Fine Arts School of Architecture in Copenhagen in 2009. The exhibition Land Architecture People was held there in autumn 2009 to inaugurate his professorship. The exhibition was subsequently shown at the vast 1,400 sq metre Ambika P3 Gallery in central London in 2010 and is intended to travel to China, Korea, India and Brazil with the support of the British Council. Pierre d'Avoine invited anthropologist Clare Melhuish and architect Andrew Houlton to collaborate with him on the exhibition which includes twelve large floor mounted models, pattern book projections, table top displays of maquettes, drawings and texts including interviews with clients by Clare Melhuish. The interviews were also broadcast as part of the presentation.





BIG HOUSE LITTLE HOUSE  
MORTLAKE RIVERSIDE, LONDON

Big House sits end-on to the river, forming a new landmark in a suburb of London characterised by mixed residential and industrial development. The blank street elevation protects the interior from the disturbance of busy passing traffic, while the Douglas fir boarding and brick plinth generate a warm, natural texture. Inside the house, the main living space is elevated on the second floor, extending its full length with large windows framing oblique river views. At the top is a garden room opening onto a roof terrace with bedrooms on the first floor, car-parking at ground level and a cinema in the basement.



CHATFIELD HOUSE  
GREENWICH, LONDON

Pierre d'Avoine Architects designed a house in Greenwich for a young couple with twin sons. The house is a compact brick-faced cube set on a wooded sloping site with wonderful views of the city skyline to the north. The horizontal sliding windows are in utile hardwood which match Meridian West, a Grade 2 Listed house built in the 1960s with which Chatfield House shares a large garden. The garden has been planned to accommodate a second 'Invisible' house on the site, in the future. Chatfield House won the Brick Development Association Refurbishment Award in 2009-2010.





WHITE HOUSE  
BARNES, LONDON

The clients for this project have always maintained that it transformed their lives. They made a decision to extend their existing 1920s house in suburban London, rather than buying a second home in the country. Our approach was to open up the back of the house onto the garden, which featured a beautiful wisteria, now framed by sliding French windows. The new part of the house incorporates an open-plan kitchen, dining room and garden room, which doubles up as a gallery space for the family's art collection. The garden can be glimpsed from the front of the house through glazed screens, and connections are also forged between the garden and the upstairs bedrooms by means of a pivoting steel staircase which can be lowered into position, or drawn up out of the way, as required.



SHEENDALE STUDIOS  
RICHMOND, LONDON

Sheendale Studios was built on the site of an old factory in south-west London. The development consists of six studio houses, arranged as two rows of three, placed back-to-back. Three studio houses face the street and three overlook the communal garden and parking area. Each studio house has a triple-height living room, with kitchen facilities screened behind a folding door, and very large studio windows which light up the whole interior volume. A spiral staircase is tucked into the back of the space, leading up to the bedroom on the overhanging top floor past a built-in desk on the landing in between. The landing also contains the bathroom.



## PIPER PENTHOUSES FULHAM, LONDON

Two penthouses were converted out of tank rooms on the roof of a former multi-storey research building which had been altered in the mid-1990s into luxury flats. A modular steel-framed system was used, allowing the units to be assembled and fully fitted out in the factory, transported by truck to London and installed by crane in a few days. The two ends of each unit are fully glazed, framing panoramic views over the Thames River, while the remaining facades are solid with smaller windows and clad in stainless steel mesh, which catches and shimmers in the light. Each house has two bedrooms with en-suite bathrooms, and a spacious living area with integrated kitchen and dining room opening onto a balcony.





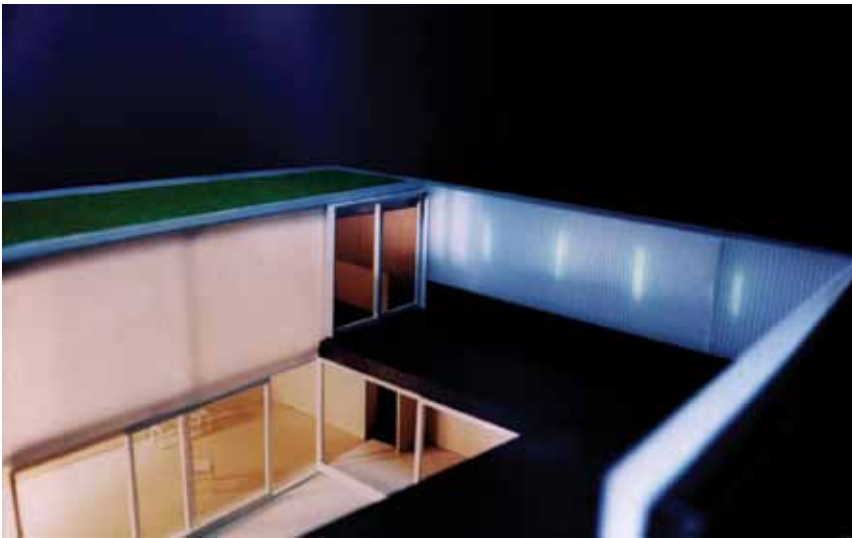
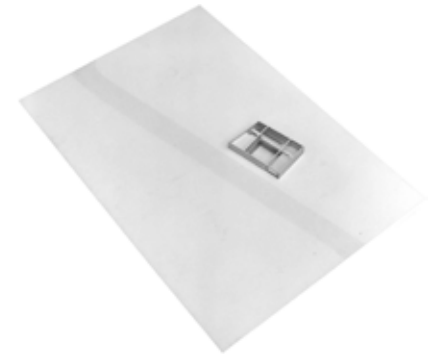
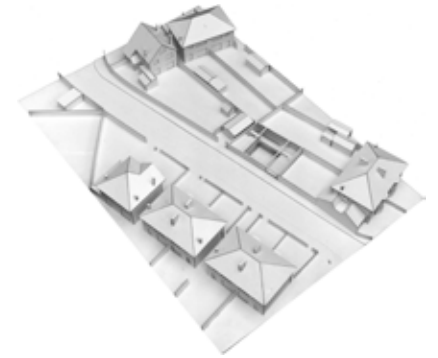
RED HOUSE  
KEW RIVERSIDE, LONDON

Red House consists of the refurbishment and roof extension of a 1960s terraced house on the Thames riverside in Kew, south-west London. The roof extension has been conceived as a glazed box opening to views of the river to the north. Vertical pivoting timber louvres provide shading and privacy. The design of the roof extension has set a precedent for other houses in the neighbourhood.



## INVISIBLE HOUSE ACTON, LONDON

The invisible approach to this design made it possible to obtain planning permission for construction of a new home on a back garden site in a residential suburban area of houses dating from the 1920s and 30s. By digging one storey of the house into the ground, around a central open courtyard, a substantial family house, in a contemporary style, could be fitted onto the site without causing problems of overlooking or infringing rights of light. The internal layout is designed as a flexible open space which can be customised to fit specific requirements, and enjoys plentiful daylight by virtue of a fully glazed facade to the courtyard on three sides. The roof of the Invisible House is mainly at ground level and is laid out as a lawn, pergola and planting boxes. As the planting matures the Invisible House disappears into the existing landscape of suburban back gardens.



SAN SALVATORE  
MONTIONE, UMBRIA, ITALY

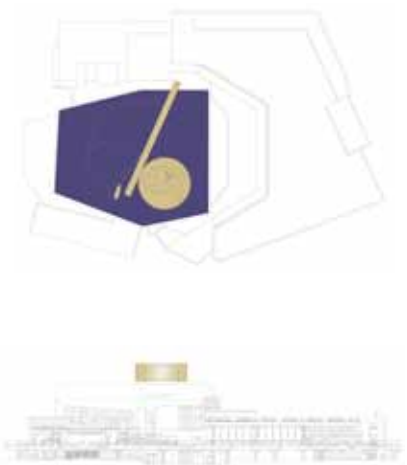
San Salvatore is a country house set in the hills above the River Tiber in the lee of an ancient castle mound. Pierre d Avoine Architects was commissioned to replan the estate to provide a summer residence for the clients. The existing building consisting of a chapel and two houses has been restored and reordered to provide a grand five bedroom house using a limited palette of materials including pietra serena stone for the flooring, in-situ concrete and terrazzo for bathrooms and selected fittings, and lime plaster to walls and ceilings. A new pool, pool room and terrace have been designed in in-situ board marked concrete to compliment the existing building, as the first stage of the larger landscape design for the estate.





## QUEEN S HEAD HOTEL SOUTH BANK, LONDON

The Queen s Head Hotel is a single room hotel for Queen Elizabeth Hall, South Bank, London designed by Studio DA (Pereen d Avoine and Pierre d Avoine). Our room for London is a glass ellipse placed on a circular gold plinth, bounded by pivoting gold and mirrored louvres, which hold aloft a golden disc crowned with a portrait of Queen Elizabeth II. We propose using the portrait of the Queen that is used on coins, medallions, stamps, seals and other royal insignia, only here at the scale of the city seen from the sky, from aircraft, from the high buildings to the south, from the top of the London Eye and from the cupola of St Paul s Cathedral. This portrait is an image that is familiar and instantly recognisable, yet at the same time classic in its symbolism. There are associations too with gold medals presented to victors at the Olympic Games and to chocolate coins found in Christmas stockings. By calling our room The Queen s Head, we also celebrate a long British tradition of naming public houses and small hotels, after the reigning monarch. Our design for The Queen s Head has a light touch it glints and sparkles above the powerful concrete forms of the South Bank. From Waterloo Bridge, the Thames and the north bank, it appears as a form on the point of dematerialising - abstract, hovering and mysterious, only revealing itself fully to those guests lucky enough to obtain a booking for the night.



Practice Information

Pierre d Avoine  
BSc Dip Arch ARB

Pierre d'Avoine runs an architects office based in London and practices internationally with work in the UK, India, Italy, Ghana, Japan, Mozambique, the West Indies and in Tehran where he designed the Climate House, a model sustainable house and exhibition centre for The Iranian Fuel Conservation Organisation, in association with Golzari (NG) Architects.

The work of the practice includes housing, offices, mixed-use developments, urban design, interior design and cultural projects, and has been widely published and exhibited. Pierre together with his partner Clare Melhuish, an anthropologist, published Housey Housey – A Pattern Book of Ideal Homes in 2005. An exhibition of dolls' houses also titled Housey Housey toured the UK in 2005-06, since the inaugural exhibition at the RIBA, London in 2004. Land Architecture People, a major exhibition by the architects Pierre d Avoine and Andrew Houlton and anthropologist Clare Melhuish was held at the Royal Danish Academy of fine Arts, Copenhagen in autumn 2009 and at Ambika P3 Gallery, London in 2010.

Pierre was born in Bombay, moved to London when he was eleven and studied architecture at the Birmingham School of Architecture in the 1970s. He set up Pierre d Avoine Architects in London in 1979. Pierre was guest professor at the Royal Danish Academy of fine Arts School of Architecture, Copenhagen 2009 -2011 and has taught and lectured in the UK, Europe and Asia.

Kuo Jze Yi  
AA Diploma

Jze Yi studied at the Architectural Association School of Architecture in London. He has practiced architecture, interior and product design and landscape design in the UK, the Netherlands, Italy, Taiwan, Japan and China.

Jze Yi joined Pierre d'Avoine Architects in 2005 where he was an integral member of the office collaborating on a range of projects including the Cumberland Mansions flat, Glastonbury housing, Rocket Room residential tower and Romford Ring Road urban plan. In 2009 he was a key member of the team on Land Architecture People an exhibition of the work of Pd AA at the Royal Danish Academy of Fine Arts, Copenhagen in 2009 and then represented Pd AA in Italy, as project architect on San Salvatore - a house, pool and landscape in Umbria.

Jze Yi established KJYAO in Beijing in 2011 and is the Pd'AA associate office in China.

Aoki Corporation (Japan) Limited  
Arcaid  
Baylight Properties plc  
London Borough of Southwark  
London Borough of Tower Hamlets  
DAKS Simpson  
The Dimpleby Newspaper Group  
Equine Consultancy Group  
Freshfields  
FUEL  
Harvey Nichols & Co Limited  
Heinz Gallery  
International Linen Promotion Limited  
Issey Miyake  
Iran Oil Conservation Corporation  
Jardine Engineering Corporation HK  
Leeds City Council  
Leeds General Infirmary  
Media Office Limited  
Sir Giles and Lady Montagu Pollock  
Mayor, Zone 10, Tehran (Iran)  
Michiko Japan Limited  
Michiko Koshino  
The Mortlake Community Association  
Natural Balance Limited  
Nuova Icona Gallery  
Optimus Computing Limited  
OR (Japan) Limited  
Parco (Japan) Limited  
Public Art Commissions Agency  
Pavilion  
Redpath Dorman Long  
Research Recordings Limited  
Resolution Property  
Richmond Properties  
Royal College of Art  
Royal Institute of British Architects  
Schneider Limited  
Sector (Holdings) Limited  
Timothy Everest  
Tricentrol plc  
Williams Murray Hamm

## EXHIBITIONS

Land Architecture People 2  
Ambika P3 Gallery, London 2010  
Land Architecture People  
Royal Danish Academy of Fine Arts,  
Copenhagen, 2009  
Sunshine in Suburbia,  
London 2006  
Pre-Fabulous London,  
Building Centre 2005  
Housey Housey 2  
RIBA, London and other galleries,  
2004-07  
Housey Housey 1  
London Metropolitan School,  
London, 2002  
Concept House 99 (winner)  
RIBA, London, 1999  
Trap  
Fused, RIBA, London, 1998  
In Search of Public Space  
DeSingel, Antwerp, 1997  
Future Southwark,  
London 1996  
HOST  
Venice Biennale, 1996  
Two houses, Bombay and London  
AA School, London, 1996  
Pierre d Avoine Architects new work  
Aberdeen, Brighton, Mackintosh,  
Oxford Brookes, 1995-97  
Tomorrow's architecture  
Business Design Centre,  
London, 1994  
Salon International d Architecture,  
Paris 1990  
Four British Architects  
9H, London, 1989  
Forty under 40 (2)  
RIBA, London, 1988  
International Linen Exposition  
Palazzo delle Stelline, Milan, 1988  
Pierre d Avoine, recent projects  
The Bartlett, UCL, London, 1987  
Forty under 40 (1)  
RIBA, London, 1985

21 new architects  
Design Centre, London, 1984  
14 young architects  
RIBA, London, 1983

## AWARDS

BDA Refurbishment Award,  
2009-10 winner  
Romford Ring Road Competition (with  
Houlton Architects),  
2008 shortlist  
Lambeth Accord Competition (with  
Houlton Architects),  
2008 runner-up  
Birbeck Island Competition (with  
WYG Planning and Design),  
2007 runner-up  
Aberystwyth Arts Centre Competition,  
2005 runner-up  
Bermondsey Square Affordable Hous-  
ing Competition,  
2004 shortlist  
Swaything Housing Competition,  
2002 runner-up  
Concept House 99  
winner  
Welsh house for the future,  
2000 runner-up  
Twickenham Riverside Competition,  
1996 third prize  
Elephant and Castle, Future South-  
wark,  
1996 winner  
Walsall Art Gallery Competition,  
1995 third prize

## BOOKS

Architecture Design Fashion Papers  
The British Council 2011  
Housey Housey -  
A Pattern Book of Ideal Homes  
Black Dog Publications 2005  
Pre Fab  
Arrieff & Burkhart, Gibbs Smith 2002  
Fuel 3000  
Miles Murray Sorrell,  
Laurence King 2000  
Modern House 2  
Clare Melhuish, Phaidon 2000  
Art and Architecture: New Affinities  
Gustavo Gili, 2000  
Lofts: Working and Living Spaces  
Watson Guptill 1999  
Public Art/Space  
Paca, Merrill Holberton 1997

## CATALOGUES

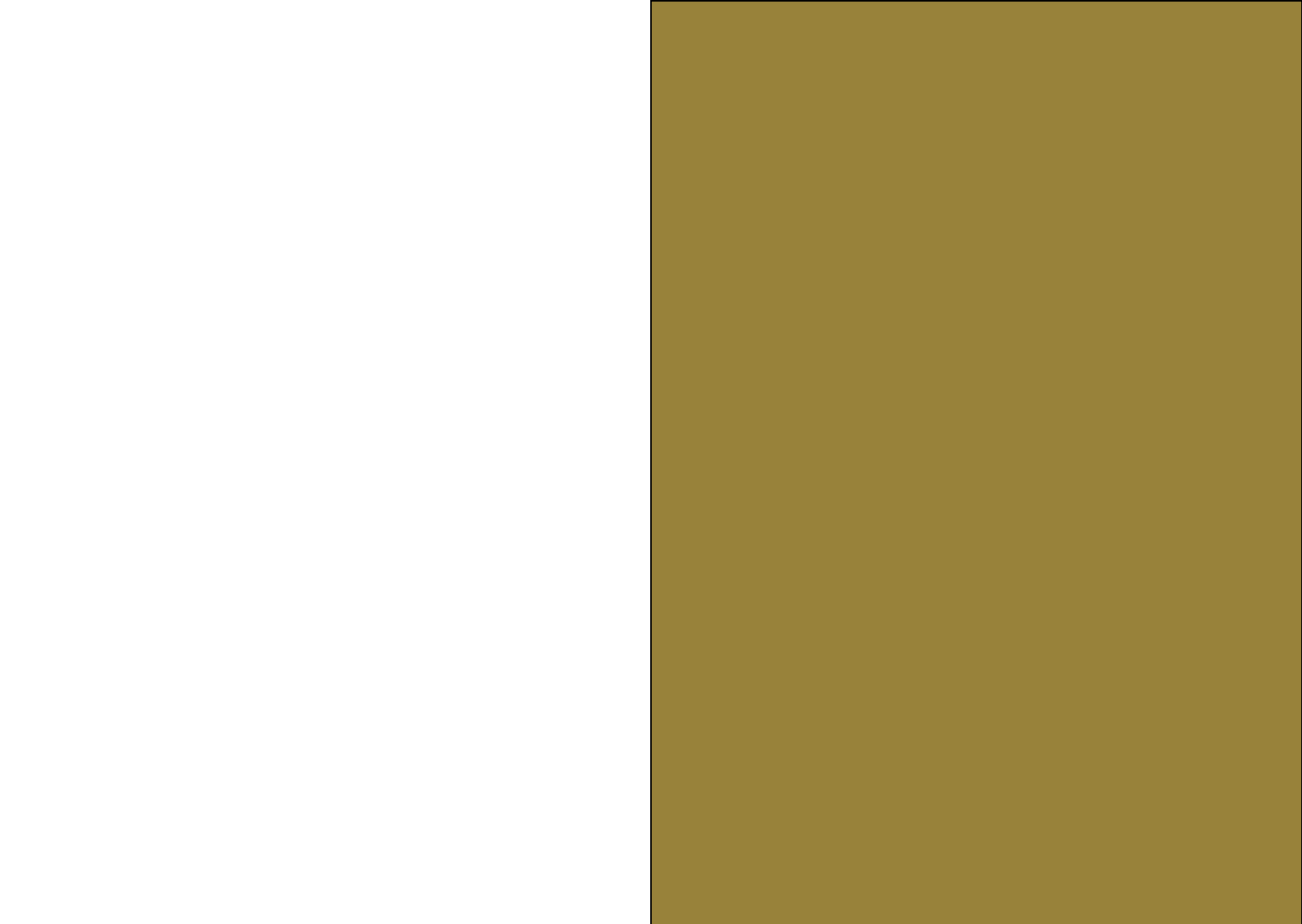
Land Architecture People  
Royal Danish Academy of Fine Arts  
2009  
Fused  
RIBA, London 1997  
In Search of Public Space  
DeSingel, Antwerp 1997  
Host  
Nuova Icona, Venice 1996  
Four British Architects: Reality and  
Project  
9H, London 1990

## TELEVISION AND RADIO

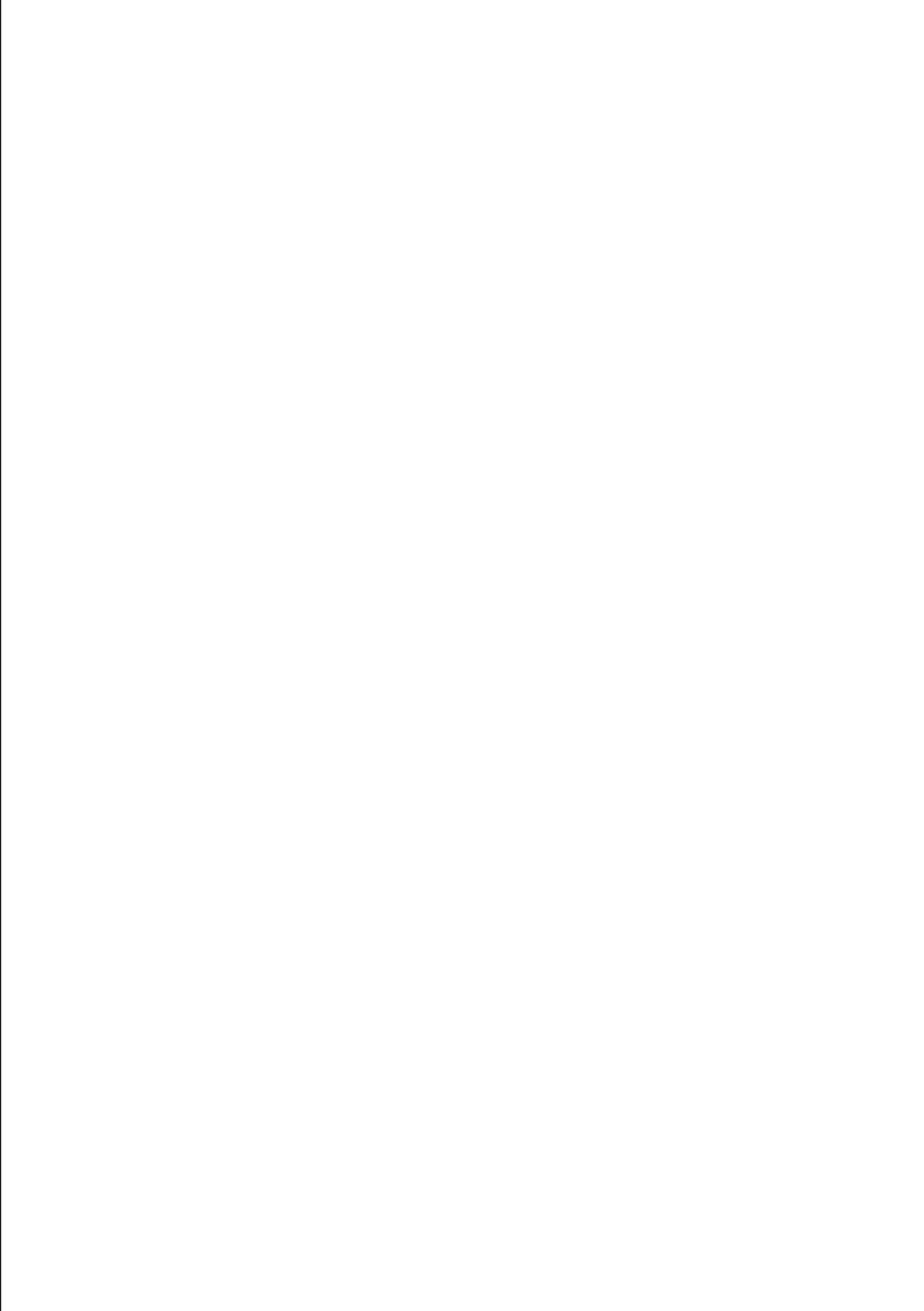
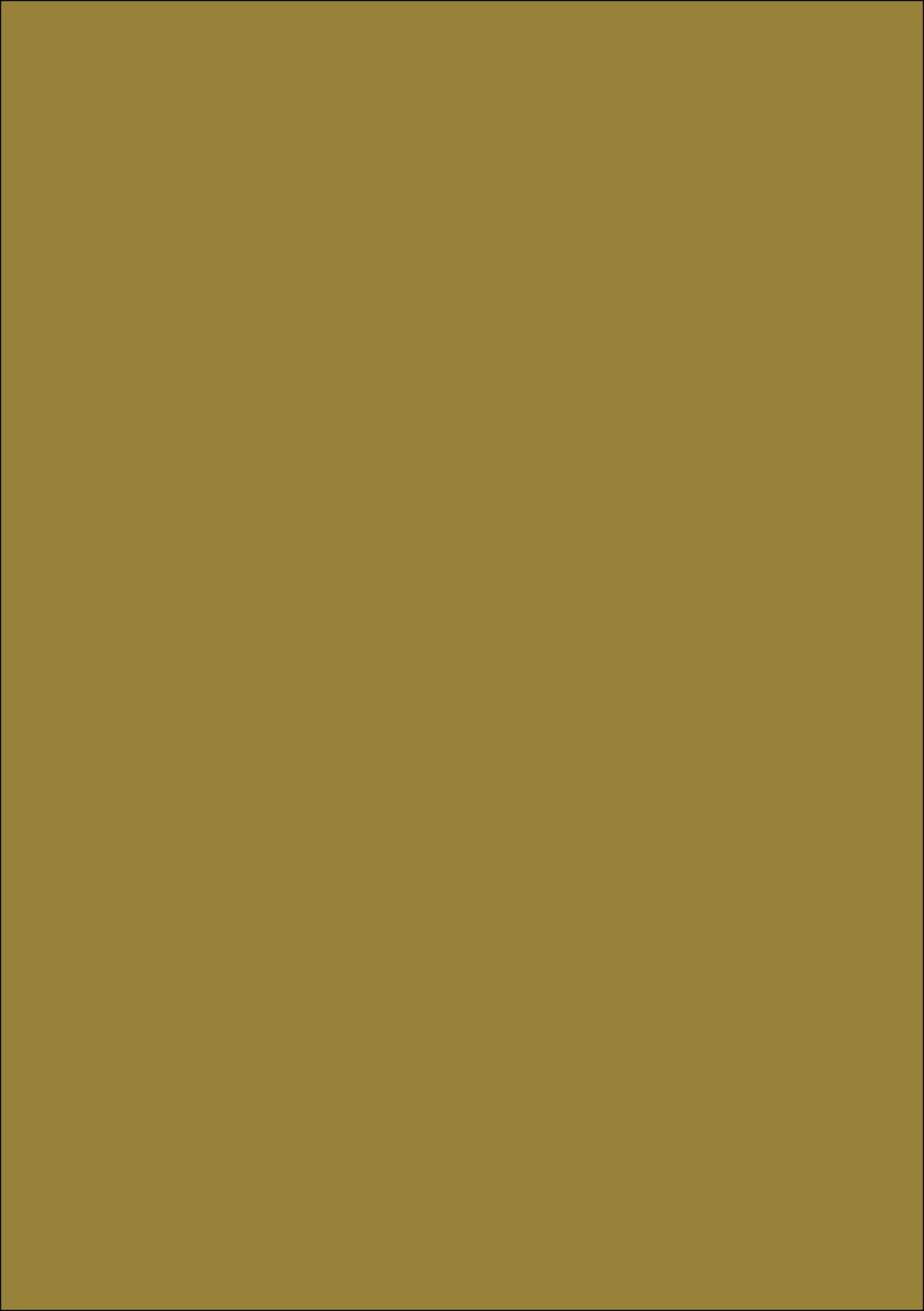
Pierre d Avoine has been featured in  
several television and radio pro-  
grammes about architecture, design  
and the environment.

## NEWSPAPERS/MAGAZINES

AA News  
Arbitare (Italy)  
Architectural Design  
Architects Journal  
Architecture Research Quarterly  
Architectural Review  
Architecture Today  
Arkitekten (Denmark)  
Bauwelt (Berlin)  
Blueprint  
Building Design  
Casa Vogue (Italy)  
Designer's Journal  
Design Week  
Diseno Interior (Italy)  
Fusion Planning (Japan)  
L Uomo Vogue (Italy)  
Lotus (Italy)  
Modern Living (Japan)  
Ottagono (Italy)  
Progressive Architecture (Japan)  
The Face  
Vogue  
World of Interiors  
World Stores (Japan)  
The Daily Telegraph  
The Financial Times  
The Guardian  
The Independent  
The Observer  
The Sunday Times  
The Times  
The Evening Standard  
The New York Times (USA)







LONDON OFFICE:

Pierre d Avoine Architects  
44 Highstone  
84 Camden Road  
London UK  
NW1 9DY

(+44)07905740961  
mail@davoine.net  
www.davoine.net

BEIJING OFFICE:

Kuo Jze Yi Architecture Office  
1102, Unit 1, Building 14,  
Zhaotangzi Hutong,  
Dongcheng District,  
Beijing 100005  
China

(+86)01065285574  
(+86)13691242115  
jzeyi@kjyao.com  
www.kjyao.com